



ST111V

TABLETOP SKINNING MACHINE



MODEL



DESCRIPTION

Versatile tabletop skinning machine suitable for various fish species and sizes. Please check our website and product matrix on the main folder for more information. When ordering, please provide STEEN with the electrical specifications and water connection available. Also inform us which fish species (preferably the scientific name) you would like to process, each with the capacity and general length. Please indicate if you have any special requirements regarding the product.

Versátil peladora de sobremesa, adecuada para diferentes especies y tamaños de pescado. Consulte nuestra web y nuestra gama de productos en la carpeta principal para obtener más información. Al realizar el pedido, proporcione a STEEN las especificaciones eléctricas y la conexión de agua disponibles. También infórmenos de las especies de pescado (preferiblemente, el nombre científico) que le gustaría procesar, cada una con su capacidad y longitud general. Asimismo, indique si tiene algún requisito especial con respecto al producto.

Versátil máquina de bancada para tirar pele de várias espécies e tamanhos de peixe. Consulte o nosso website e matriz de produtos na pasta principal para mais informação. Ao encomendar, indique à STEEN as especificações elétricas e ligação de água disponível. Informe também que espécies de peixe (de preferência o nome científico) que deseja processar, cada uma delas indicando a capacidade e comprimento geral. Convidamo-lo a indicar-nos quaisquer requisitos especiais que possa ter sobre o seu produto.

TECHNICAL DATA

| FEATURE | DATA |
|-------------------|---------------------|
| Operators | 1 |
| Voltage range (1) | 220- 480V 50-60Hz |
| Power (1) | 0,55kW/3 phase |
| Controls | 24V |
| LxWxH (2) | 707 x 313 x 264 mm |
| Weight (3) | 47 kg |
| Working width (2) | 298 mm |
| Water usage (4) | - |
| Water connection | 1/2" |
| Air usage | - |
| Air connection | - |
| Speed (5) | +/- 22 m per minute |

(1) depending on requested voltage

(2) 1mm = 0,03937 inches

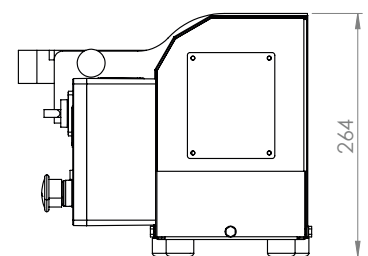
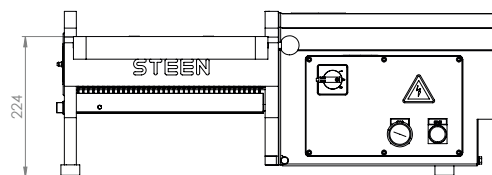
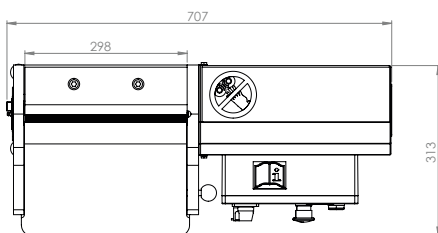
(3) 1kg = 2,20462 pounds

(4) spray system is optional if required

(5) $\frac{2200\text{cm/min}}{\text{length fillet (cm)} + 5\text{cm}} = \text{theoretical capacity}$



FOOTPRINT



Due to the high degree of customization possibilities, technical data of the final product may vary.

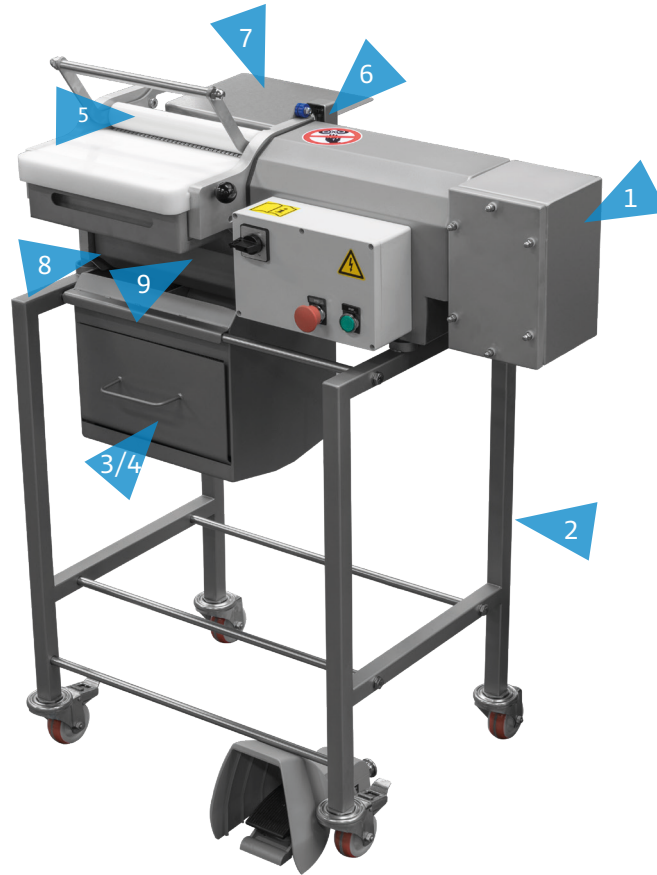


OPTIONS



ST111V

TABLETOP SKINNING MACHINE



111/SC600MF

1



Converter 220V single phase

111/SC602

2



Table for machine at optimal height

111/SC603

3



Skin collector with(603) or without(611) water drainage

111/SC611

4

111/SC001A

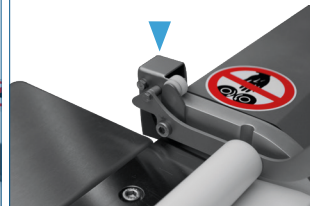
5



Upper roller to close skinning gap for more safety

111/SC046A

6



Safety switch

111/SC018A8

7



Outfeed tray

111/SC045A

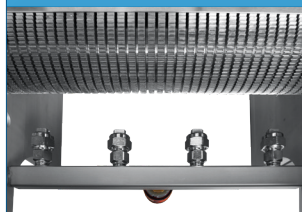
8



Guarded shielding

111/SC042A

9



Spray system

CUSTOMIZED

10



Tailor-made solution

Due to the high degree of customization possibilities, technical data of the final product may vary.